

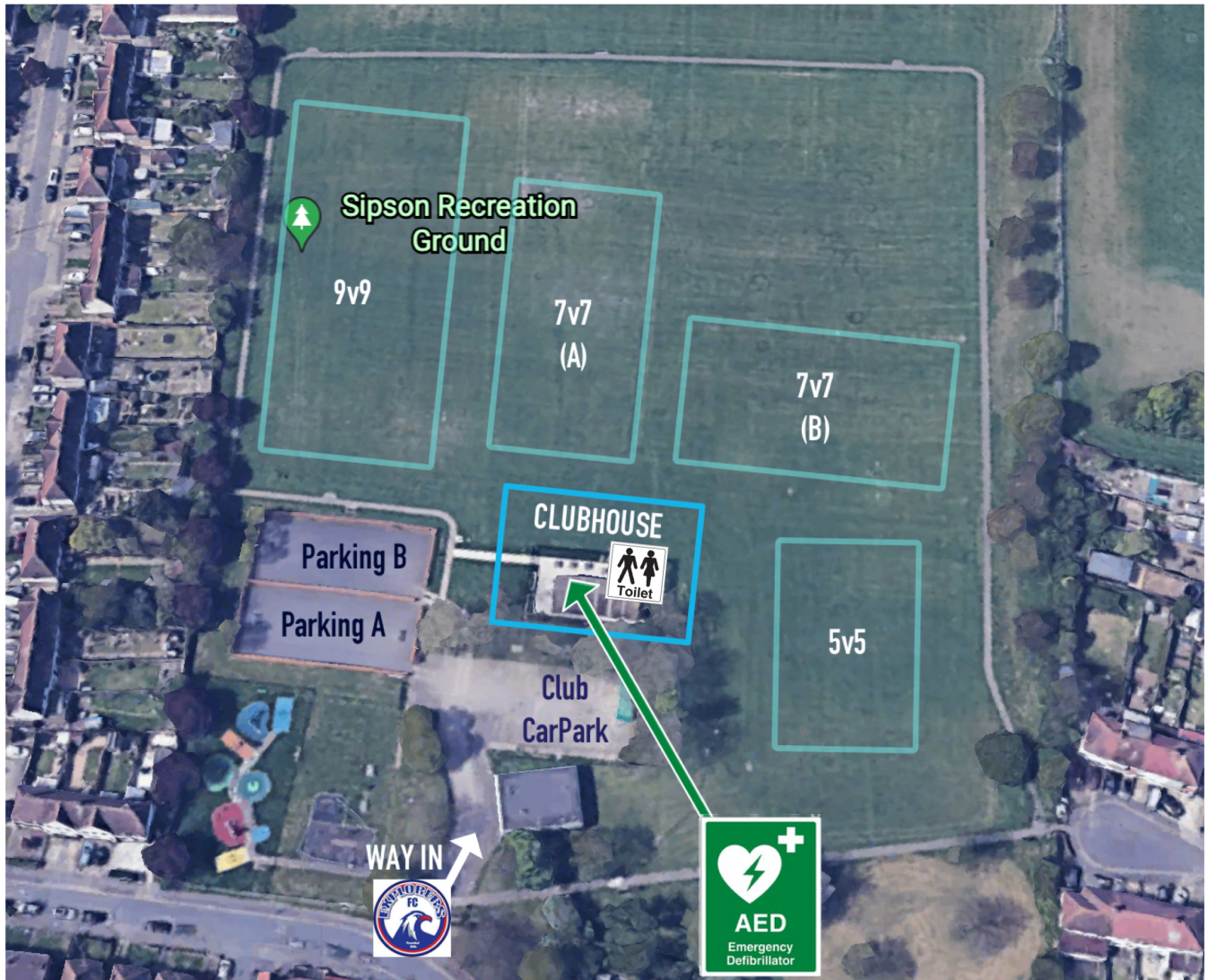


EXPLORERS FOOTBALL CLUB



ACCREDITED
PART OF ENGLAND FOOTBALL

www.explorersfootballclub.com



Explorers Football Club
Sipson Recreation Ground
Sipson Way, Sipson
Middx
UB7 0DW
Secretary : 07588 382753



FIRST AID EQUIPMENT

- All coaches carry First Aid Equipment
- The Explorers Clubhouse has First Aid Equipment

DEFIBRILLATOR LOCATED OUTSIDE CLUBHOUSE

- AED Emergency Defibrillator is located on the Clubhouse Building (See Map Above)



FIRST AIDERS

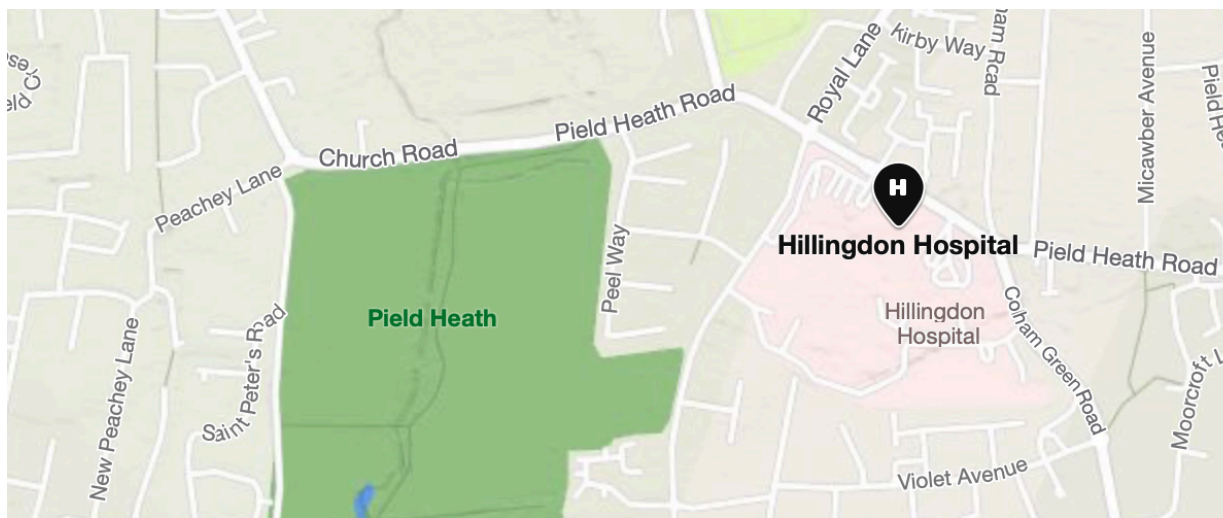
- All team coaches have completed FA Level 1 Introduction to First Aid in Football

NEAREST HOSPITAL WITH ACCIDENT & EMERGENCY

Hillingdon Hospital

Pield Heath Road, Uxbridge, Middx, UB8 3NN

Tel : 01895 238282



NEAREST MINOR INJURIES DEPT (Mon-Sat : 9am-6pm)

Mount Vernon Hospital

Rickmansworth Rd, Northwood, Middx, HA6 2RN

Tel: 01923 826111

*If we behave positively
during practice and matches,
our children will too.*

*By setting a good example, we'll help
build a supportive environment in which
everyone can enjoy themselves.*



Play Your Part (Code of Conduct)

Spectators and Parents/Carers

**Play your part and support
The FA's Code of Respect:**

I will:

- Have fun; it's what we're all here for!
- Celebrate effort and good play from both sides
- Always respect the Referee and coaches and encourage players to do the same
- Stay behind the touchline and within the Designated Spectators' Area (where provided)
- When players make mistakes, offer them encouragement to try again next time
- Never engage in, or tolerate offensive, insulting or abusive language or behaviour
- I will make myself familiar with safeguarding practices & review guidance on **physical contact** (5.6) & **Acceptable Behaviours When Working With Young People** (5.7) documents on the safeguarding section of EnglandFootball.com

**I understand that if I do not follow the Code,
I may be:**

- Issued with a verbal warning or asked to leave
- Required to meet with the club committee, league or CFA Welfare Officer
- Obligated to undertake an FA education course
- Requested not to attend future games, be suspended or have my membership removed
- Required to leave the club along with any dependents and/or issued a fine



Building society with mutual respect

*We ONLY
do
Positive.*